

1064nm* Narrow Band External Cavity Laser Module

14pin Butterfly Module

* Selective in 920-1070nm range



Product Specifications at 25°C

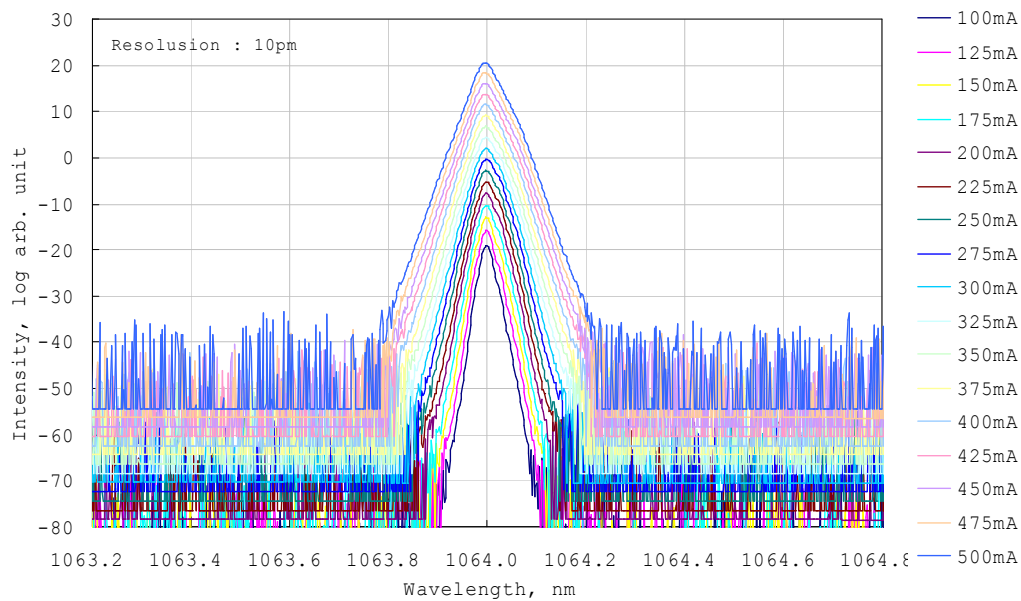
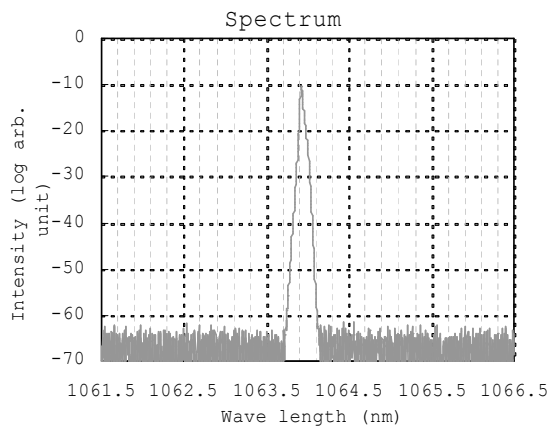
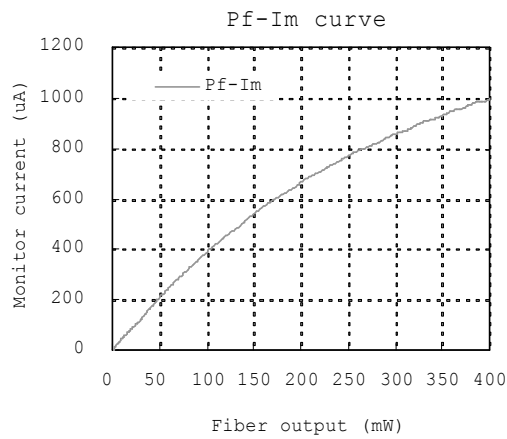
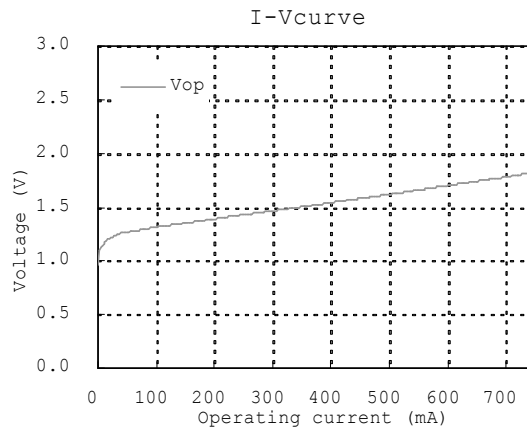
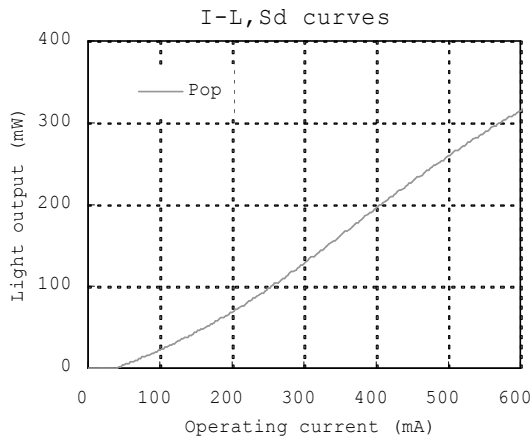
Type			
Model No.		A64103230M8	
Operating current	I _{op}	mA	500
Forward Voltage	V _{op}	V	1.6
Fiber output	P _f	mW	250
	I _{th}	mA	45
Center Wavelength	λ _c	nm	1064
	SMSR	dB	>30
	FWHM Δλ	pm	40
Monitor PD response	R _{pd}	uA/mW	0.2
TEC Current	I _{TEC}	A	1.1
TEC Voltage	V _{TEC}	V	2.3
Thermistor Resistance	R _{th}	kohm	10
Thermistor Constant	B	K	3950
Fiber Type	PMF		

Absolute Maximum Ratings

			min	max	
Storage Temp	T _{st}	°C	-40	85	
Operating Case Temp	T _{op}	°C	-20	70	
Soldering Temp(max.10sec.)		°C		260	5s, Lead soldering
LD Forward Current	I _{max}	mA		750	
LD Reverse Voltage	V _{rmax}	V		2	
TEC Current	I _{tecmax}	A		1.8	
TEC Voltage	V _{tec.max}	V		3	
ESD Damage(Human body model)		V		500	
Fiber Pigtail Bend Radius		mm	25		

OPTOENERGY

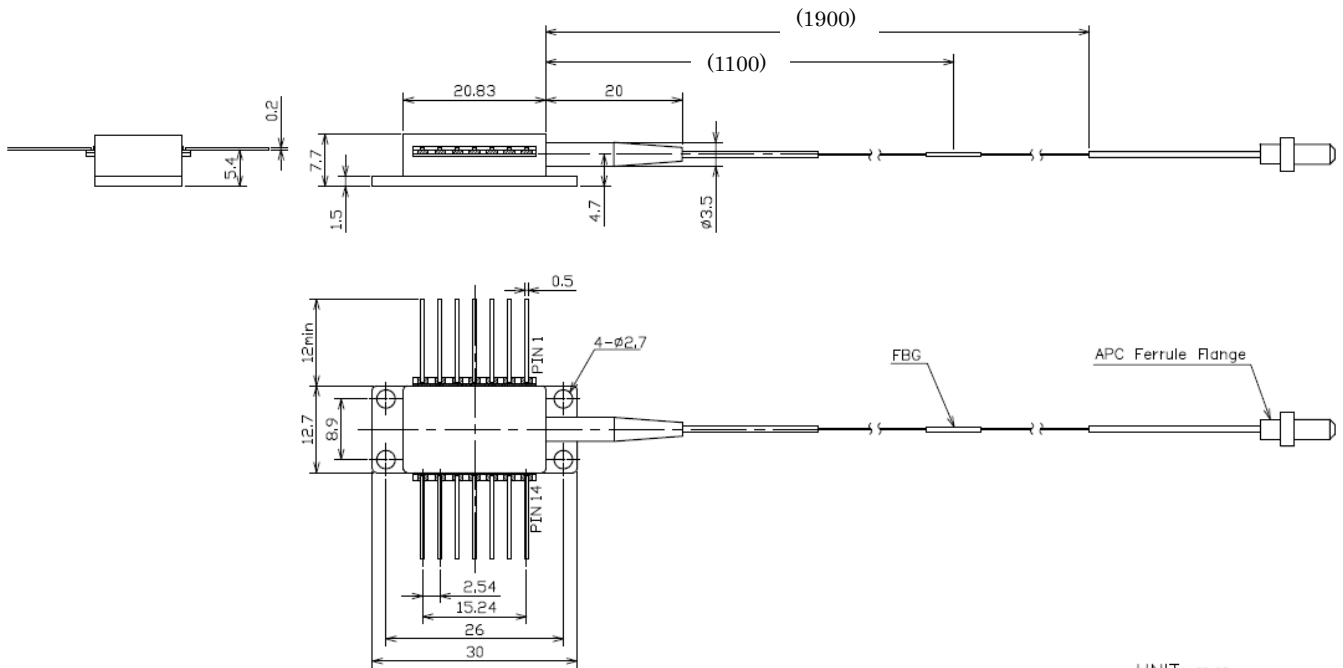
Typical Characteristics



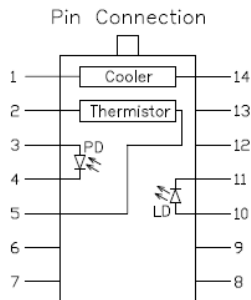
OPTOENERGY

Package

14pin Butterfly Module with FBG



UNIT: mm
<No.05020-03>



For Singlemode

Pin	Description	Pin	Description
1	Cooler(+)	14	Cooler(-)
2	Thermistor	13	Case ground
3	PD anode	12	NC
4	PD cathode	11	Laser cathode
5	Thermistor	10	Laser anode
6	NC	9	NC
7	NC	8	NC

For Multimode

Pin	Description	Pin	Description
1	Cooler(+)	14	Cooler(-)
2	Thermistor	13	Case ground
3	PD anode	12	Laser cathode
4	PD cathode	11	Laser cathode
5	Thermistor	10	Laser anode
6	NC	9	Laser anode
7	NC	8	NC

Caution

This laser emits invisible radiation which may be harmful to the eyes. Avoid direct or reflected light from this device. Because of the small size of these devices, each of the labels is attached to the individual shipping container.

