

High-Power 975 nm Multimode Laser

Chip on submount / F package

915, 940nm Available



Product Specifications at 25°C

Type	OE975G3 Series		
Model No.	975031412		
Operating light output	P _o	W	12
Center wavelength	λ _c	nm	975
Emitter aperture width	W _a	um	100
Cavity Length	L	mm	6
Threshold current	I _{th}	A	1.2
Slope efficiency	η _s	W/A	1.0
Operating current	I _{op}	A	14
Operating voltage	V _{op}	V	1.7
Spectral width	Δλ	nm	3
Spectral temperature shift	dλ/dT	nm/K	0.3
Far-field parallel FWHM	θ _{//}	deg.	9
Far-field perpendicular FWHM	θ _⊥	deg.	26
Polarization	TE		

Absolute Maximum Ratings

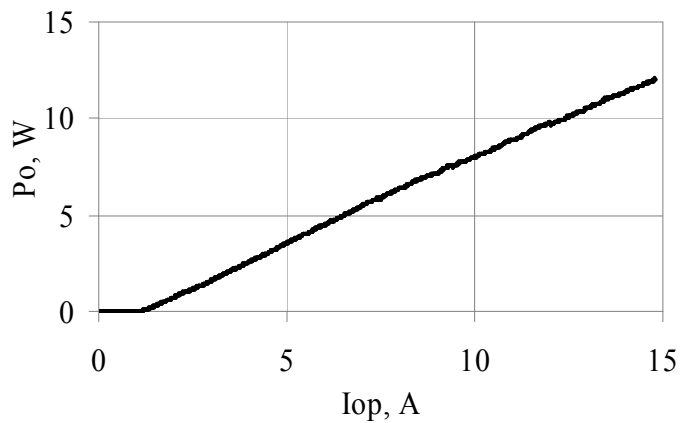
			min	max		
Forward current	I _{max}	A	-	15.0	OE975G3	100u aperture
Reverse voltage	V _{rmax}	V	-	2.0		
Operating temperature	T _{op}	°C	-20	50	non condensing	
Process temperature	T _{pr}	°C	-	250	5s, Chip on submount	
ESD	V		-	500	Human Body Model	

OPTOENERGY

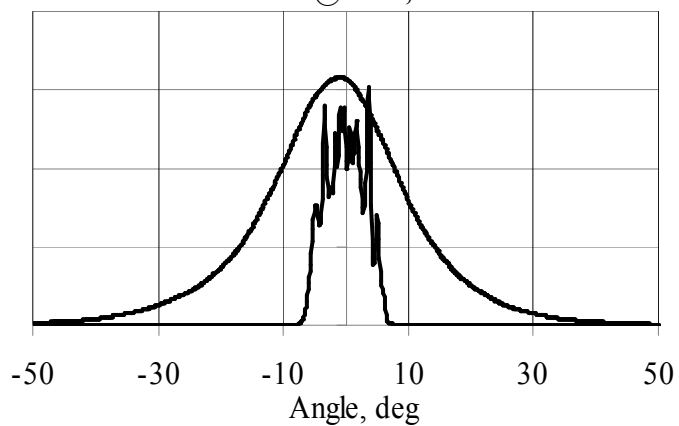
Typical Characteristics

L-I / FFP

975031412

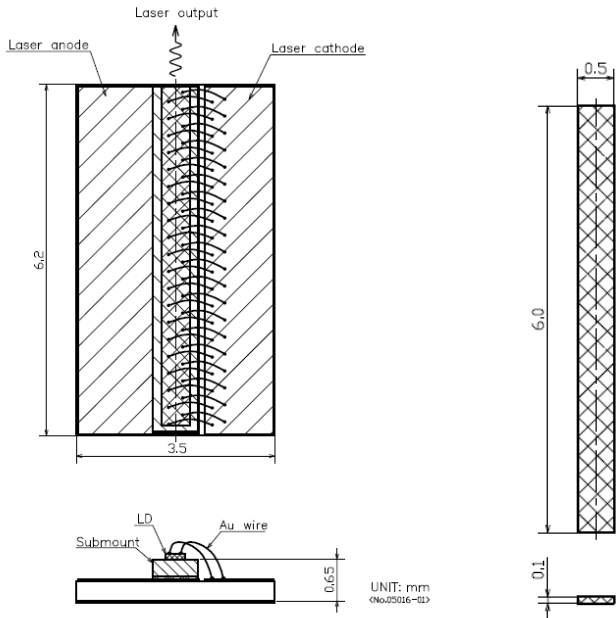


FFP@12W,25C

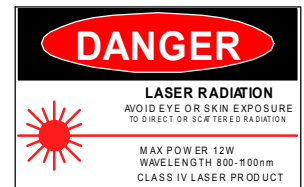
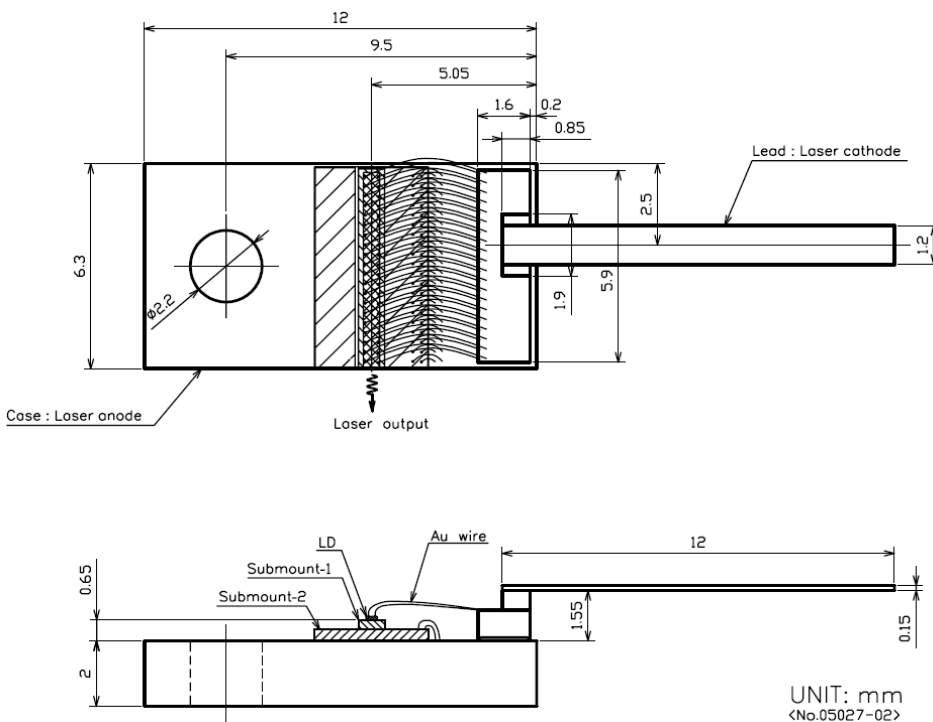


OPTOENERGY

Package COS



F-package



Caution

This laser emits invisible radiation which may be harmful to the eyes. Avoid direct or reflected light from this device. Because of the small size of these devices, each of the labels is attached to the individual shipping container.