

Fiber Coupled 980nm Singlemode Laser Module

14pin Butterfly Module



Product Specifications at 25°C

Type			
Model No.		975034230M	
Fiber output	Pf	mW	450
Center wavelength	λ_c	nm	975
Threshold current	Ith	mA	75/85
Operating current	Iop	mA	870
Operating voltage	Vop	V	1.9
Fiber Bragg Grating	with/without		
Spectral width	$\Delta\lambda$	nm	0.5/2.0
Fiber type		SM/PMF	
	Lfiber	m	3.0/2.0
Monitor PD reverse bias	VRpd	V	5
Monitor PD response	Rpd	mA/W	0.5
Thermistor temperature	Ts	C	25
Case temperature	Tc	C	50
TEC current	Itec	A	1.4
TEC voltage	Vtec	V	2.1
Thermistor resistance	TR	kohm	10
Thermistor B constant	TB	K	3950

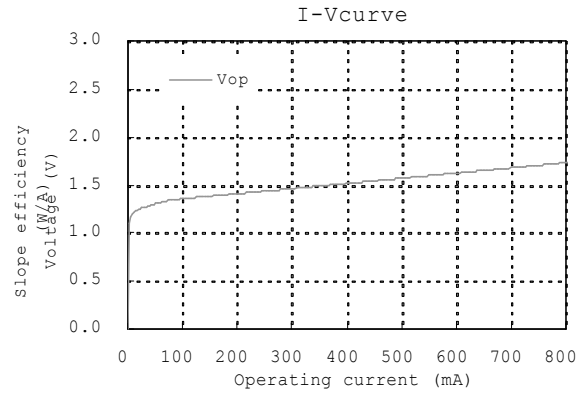
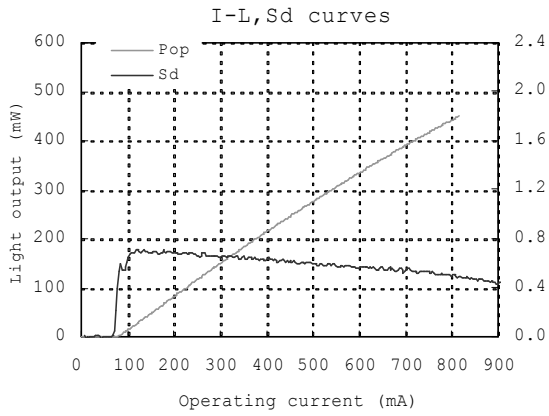
Absolute Maximum Ratings

			min	max	
Forward current	I _{max}	mA	-	1100	
Reverse voltage	V _{rmax}	V	-	2.0	
Operating temperature	T _{op}	°C	-20	50	
Storage temperature	T _{st}	°C	-40	85	
PD reverse voltage	V _{rmax}	V	-	10.0	
TEC current	I _{tecmax}	A	-	2.5	
TEC voltage	V _{tecmax}	V	-	3.2	
Process temperature	T _{pr}	°C	-	250	<5s, Package lead

OPTOENERGY

Typical Characteristics

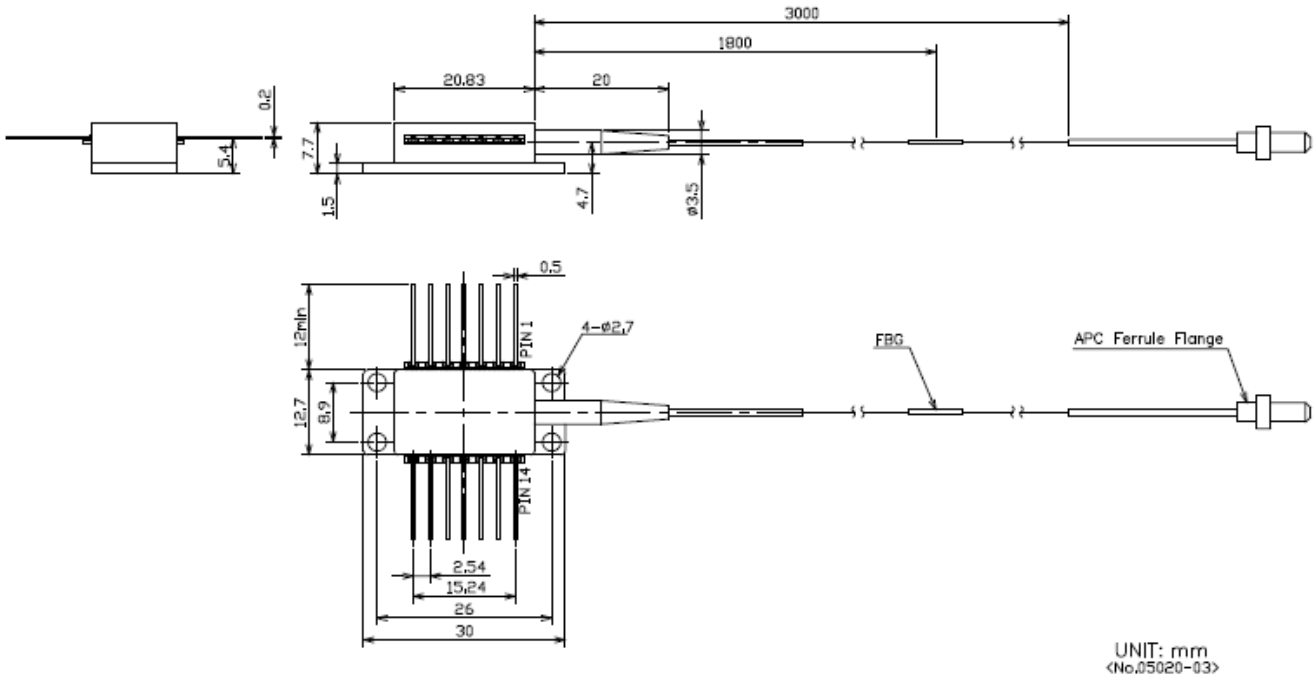
975nm SM with FBG



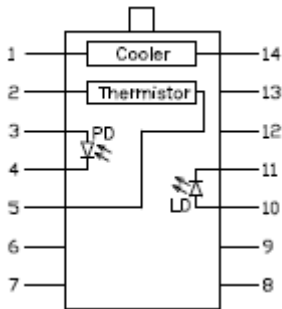
OPTOENERGY

Package

14pin Butterfly Module with FBG



Pin Connection



For Singlemode

Pin	Description	Pin	Description
1	Cooler(+)	14	Cooler(-)
2	Thermistor	13	Case ground
3	PD anode	12	NC
4	PD cathode	11	Laser cathode
5	Thermistor	10	Laser anode
6	NC	9	NC
7	NC	8	NC

Caution

This laser emits invisible radiation which may be harmful to the eyes.

Avoid direct or reflected light from this device. Because of the small size of these devices, each of the labels is attached to the individual shipping container.

